



LEAVENWORTH
COUNTY
DEVELOPMENT CORP

LEAVENWORTH COUNTY DEVELOPMENT CORPORATION BUSINESS RETENTION & EXPANSION REPORT – 2011 SUMMARY

The following report shows results obtained from 100 business visits during 2011. As part of LCDC's Business Retention and Expansion Program, the data is released to demonstrate the current business climate and assistance provided to Leavenworth County businesses.

BUSINESS VISIT DATA

26 of the companies interviewed in 2011 reported an increase in sales or revenue over the past 12 months. 13% reported a decrease in sales or revenue the 12 months prior to the business visit.

EMPLOYEES

	Full-time	Part-time	Total	% living in county*
4th Quarter	1,694	125	1,819	72.0%
2011	6,867	582	7,449	70.8%

*This statistic is not tracked by or readily available at all businesses visited. Above numbers reflect data from 12 businesses in the fourth quarter and 85 businesses in 2011. According to www.kcworkforce.com (October 2011 data), 61.4% of workers in Leavenworth County are also residents of Leavenworth County.

EXPANSION & DOWNSIZING

	Job Expansions		Job Downsizings	
	# of businesses	# of positions added	# of businesses	# of positions eliminated
4th Quarter	3	30	4	106
2011	14	99	10	152

Expansion Plans for Next Year

In 2011, 20 companies indicated plans to expand in the next year by adding employees, increasing capital investment in equipment, diversifying production, or increasing size of facilities.

BUSINESS ASSISTANCE

	Businesses Assisted	Unique Assistance Opportunities	Grants/Incentives Potential Identified	Grants/Incentives Awarded
This Quarter	7	9	-	-
2011	26	37	\$182,392	\$22,200 ⁺

⁺Potential for this grant was identified in a previous year.

For more information regarding existing business initiatives at Leavenworth County Development Corporation, please contact Cecilia Harry, Economic Development Coordinator.
charry@LVCountyED.org | 913-727-6111

WORKFORCE

Over the course of 2011, 22 businesses reported some difficulty in finding qualified labor for open positions or during recent hiring experiences. Reasons for difficulty included:

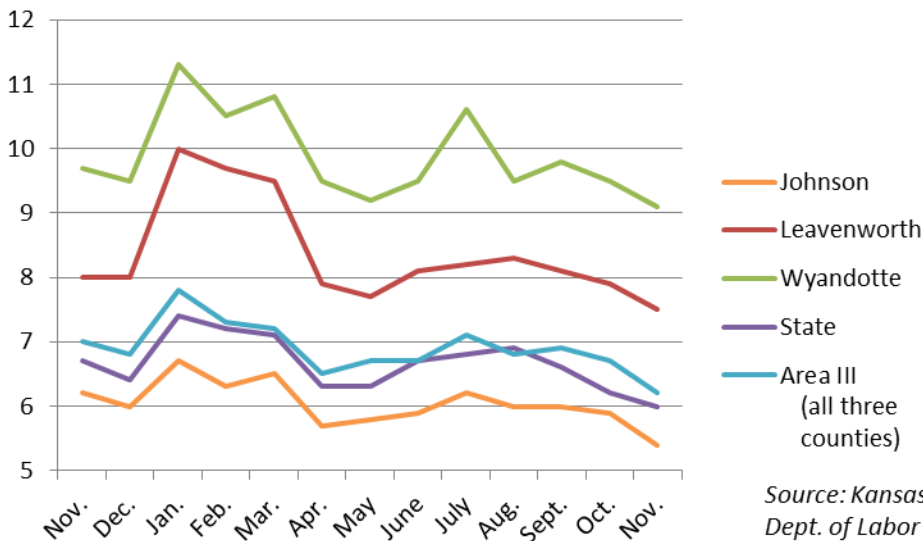
- moderate to high turnover
- hiring freezes
- competition with other local entities
- difficulty selling the lower cost of living of the region

LABOR FORCE ESTIMATES

		November 2011	October 2011	November 2010
Leavenworth Country	Civilian Labor Force	32,369	32,585	32,183
	Employment	29,951	29,998	29,618
	Unemployment	2,418	2,587	2,565
	Unemployment Rate	7.5%	7.9%	8.0%
State of Kansas Unemployment Rate		6.0%	6.2%	6.7%

(Source: Kansas Department of Labor)

UNEMPLOYMENT RATES, 11/2010 – 11/2011



2011 PROFILE OF PARTICIPATING BUSINESSES & AGENCIES

Public vs. Private Private - 82 Public - 18

Markets Local – 43 Regional – 27 National – 22 International – 8

Industry Type

- | | |
|---------------------------------------|-------------------------------------|
| Agriculture/Mining – 2 | Health Care – 4 |
| Arts, Entertainment & Recreation – 1 | Information – 1 |
| Construction – 9 | Manufacturing – 19 |
| Defense – 5 | Professional/Technical Services – 4 |
| Distribution – 2 | Public Administration – 12 |
| Educational Services – 8 | Transportation & Warehousing – 3 |
| Finance, Insurance & Real Estate – 22 | Utilities – 8 |